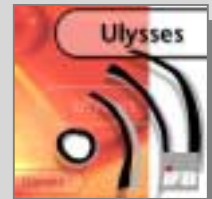
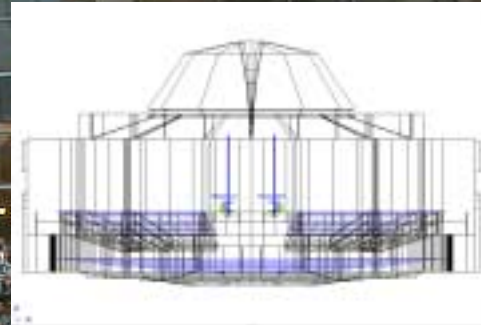
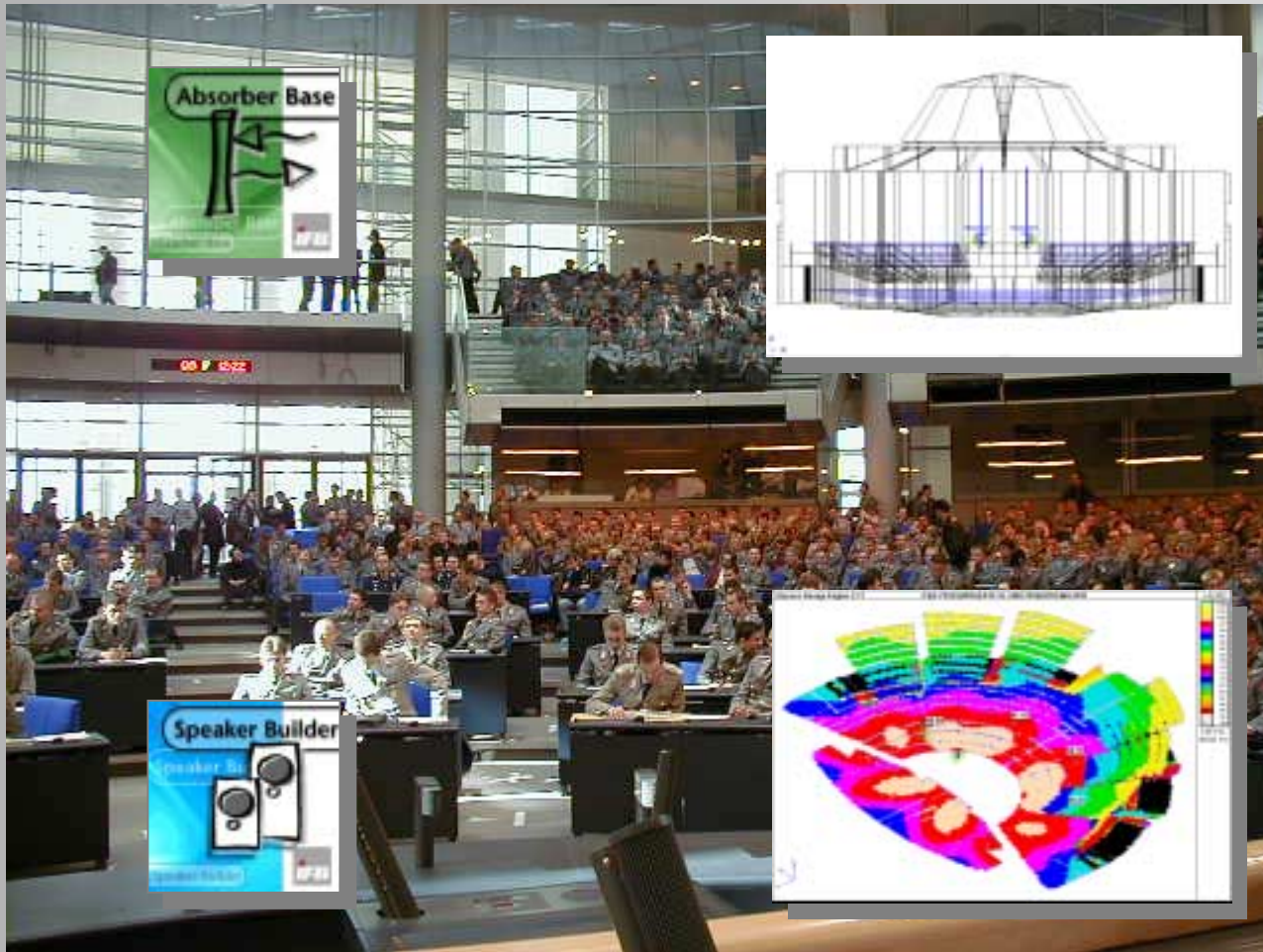


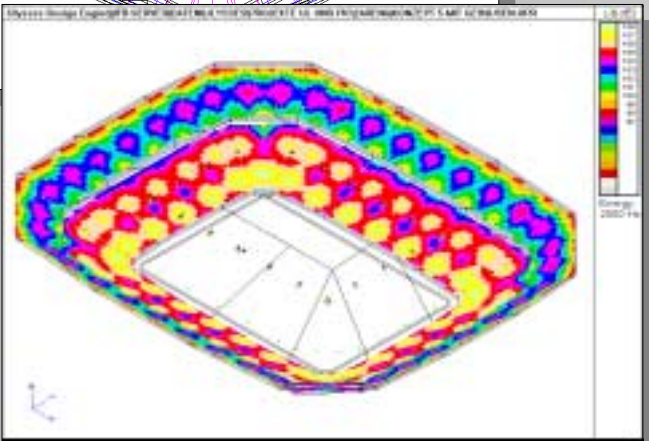
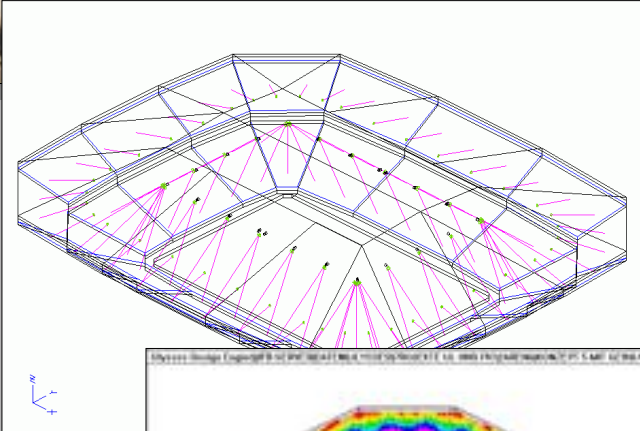
# ULYSSES

## Acoustic & Sound System Design Simulation Software



German Parliament, Reichstag Berlin, Germany,  
A Project designed in ULYSSES

„Arena auf Schalke“, one of Europe's most modern 60.000 seat Soccer Arena to be used for 2006 World Championship  
Another Project designed in ULYSSES



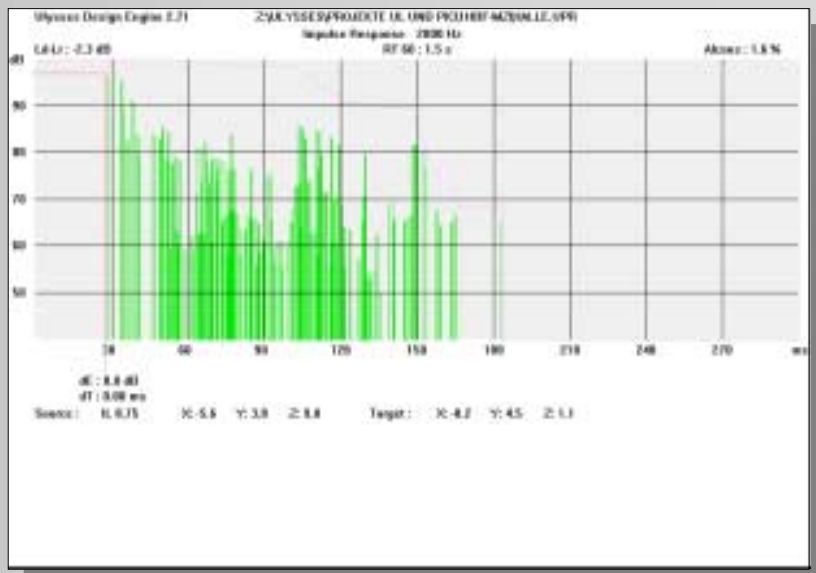
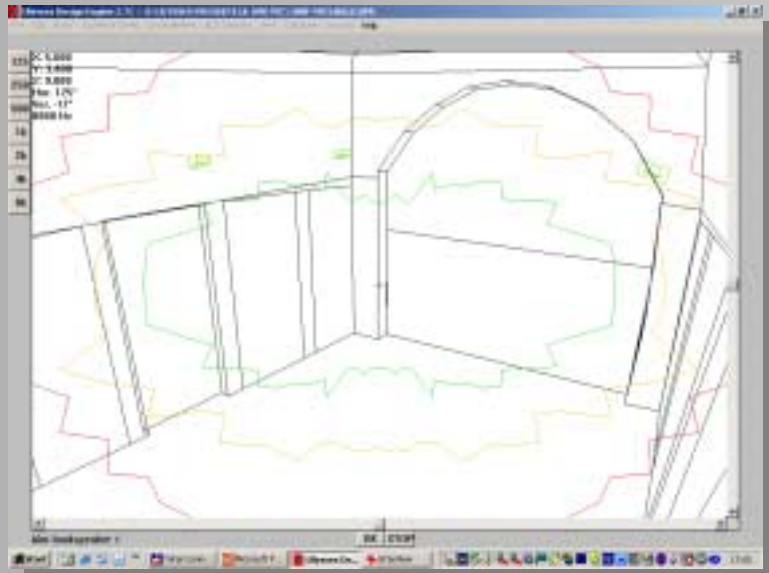
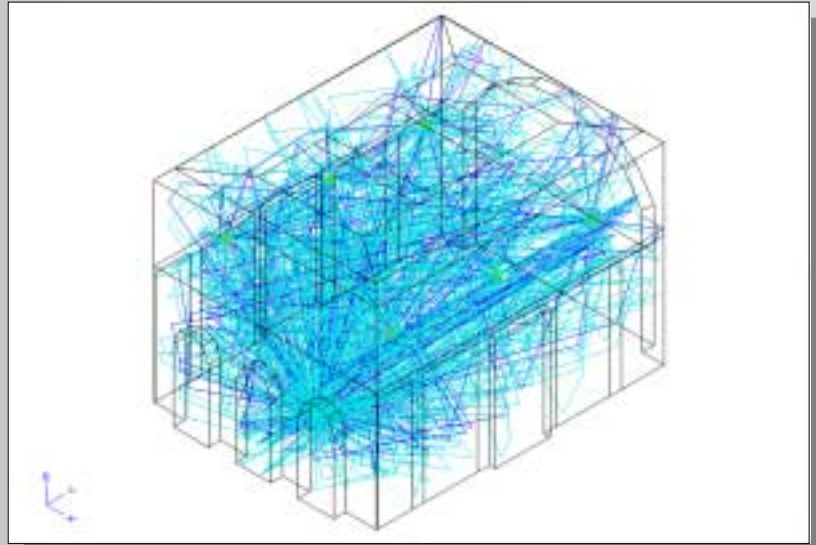
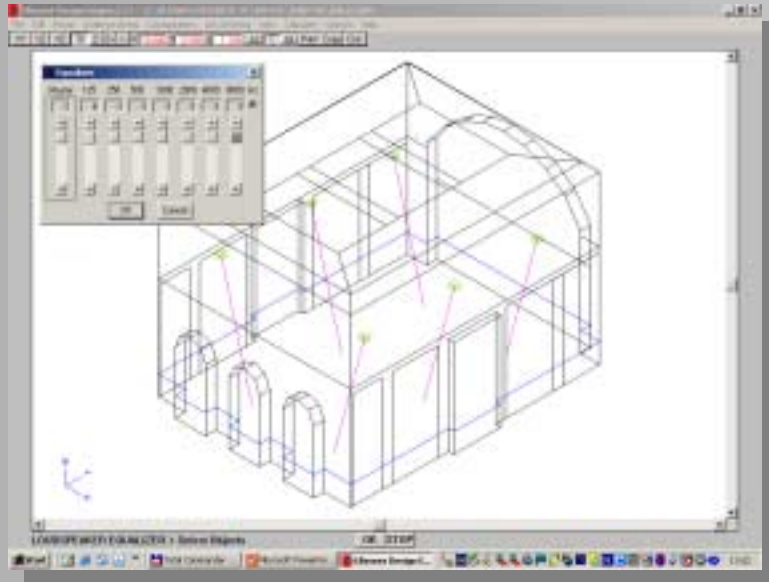




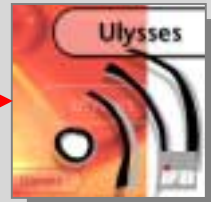
# ULYSSES

## Acoustic & Sound System Design & Simulation Software

### Sample Screenshots

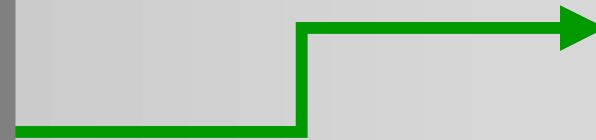
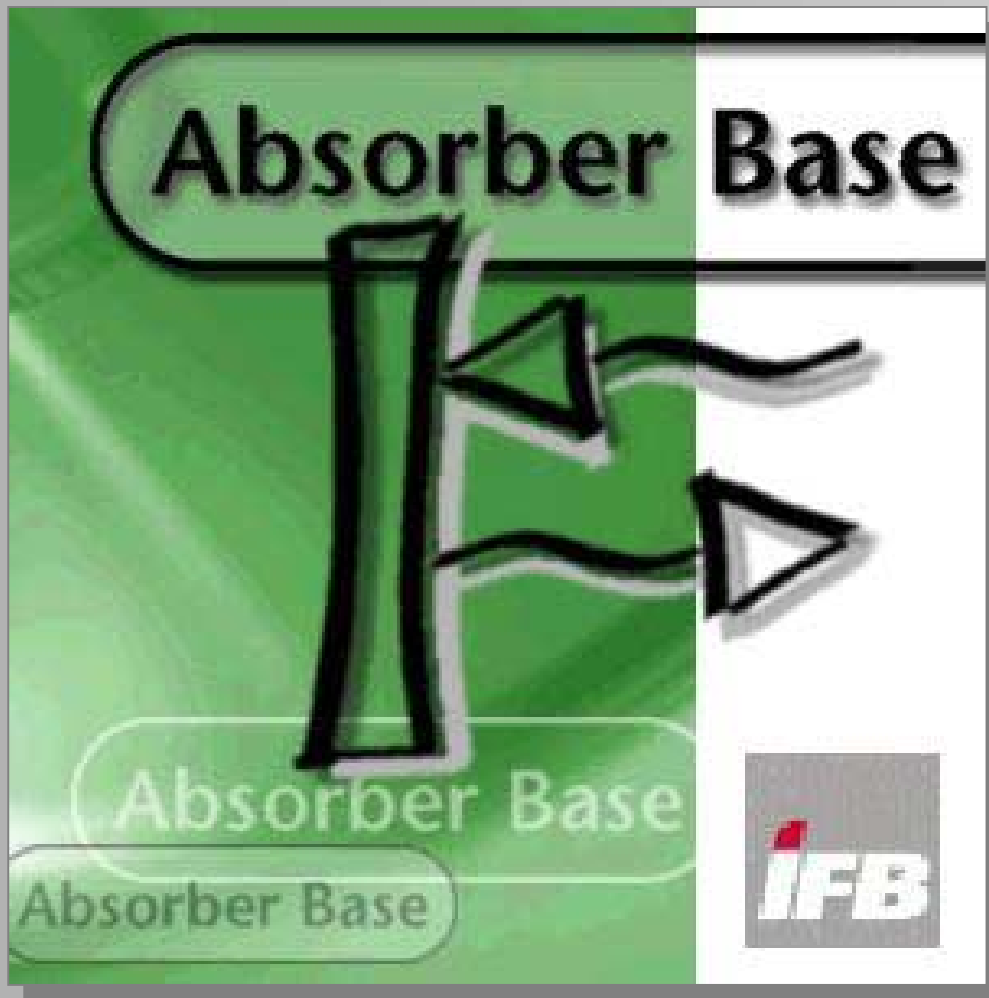


# ULYSSES Design Engine



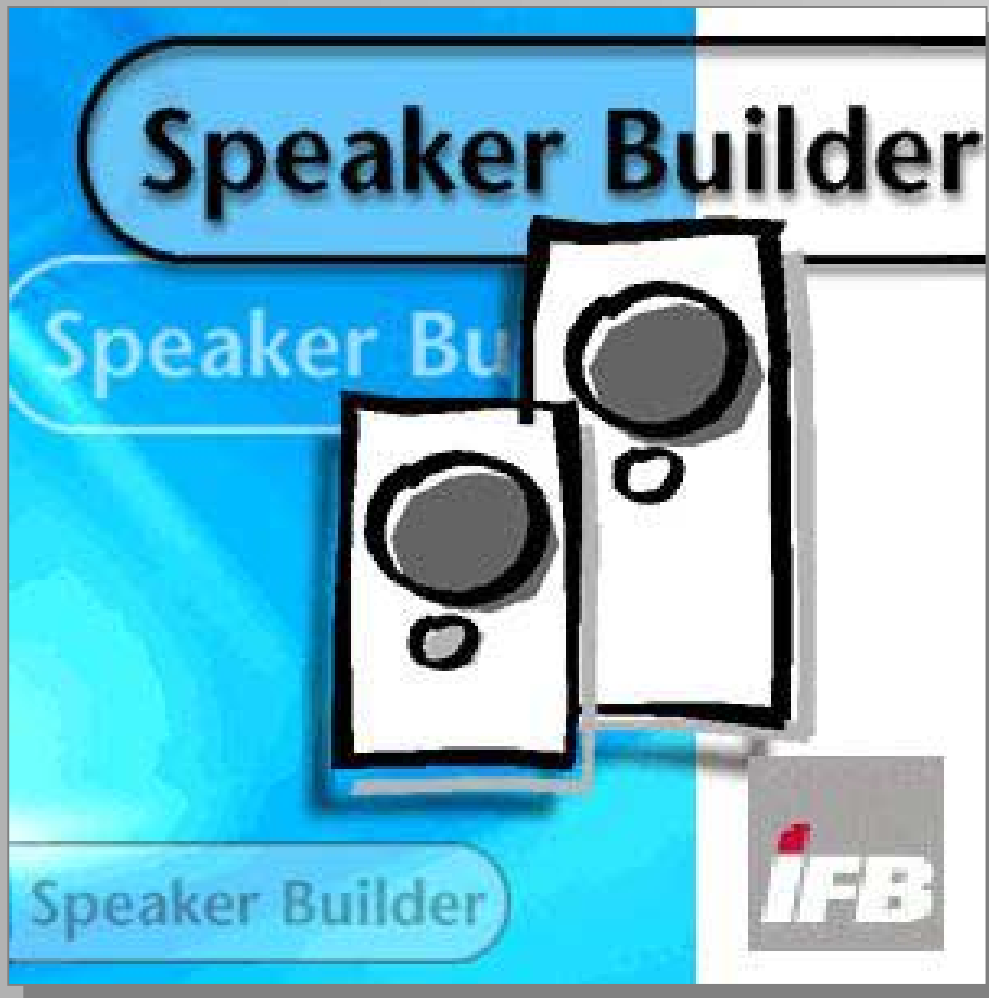
Design, Drawing, Calculation, Simulation, Ray-Training, Auralization ...

# ULYSSES Absorber Base



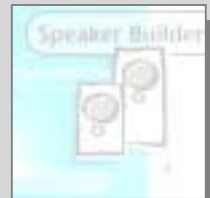
Absorber Basse, to look up and edit absorber Data to be used in simulation

# ULYSSES Speaker Builder

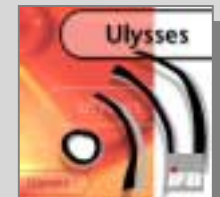


Speaker Base, to look up and to manage and edit (edit = Manufacturer only )  
Speaker Data to be used in simulation

# ULYSSES Viewer

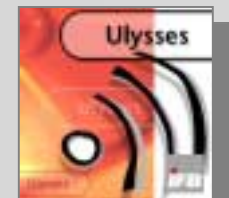


Viewer for third party use to view all project data w/o having a ULYSSES license





# IFB Education



ULYSSES Software, Seminars & Workshops